

CIRCULAR ECONOMY PANEUROPEAN

Online Workshop
7th October 2020



Circular Port Assets

Breakout sessions, topic #1

Fenna Blomsma, Maria Loloni, Monika Elend

In this session we will focus on theme 1

In the other sessions the other two themes will be discussed...



Circular port assets & equipment

Optimisation of capacity and life-time extension of port assets, such as buildings, cranes, quays, buoys and other equipment through smarter use (e.g. renting, sharing) and smarter maintenance.



Circular flows within ports

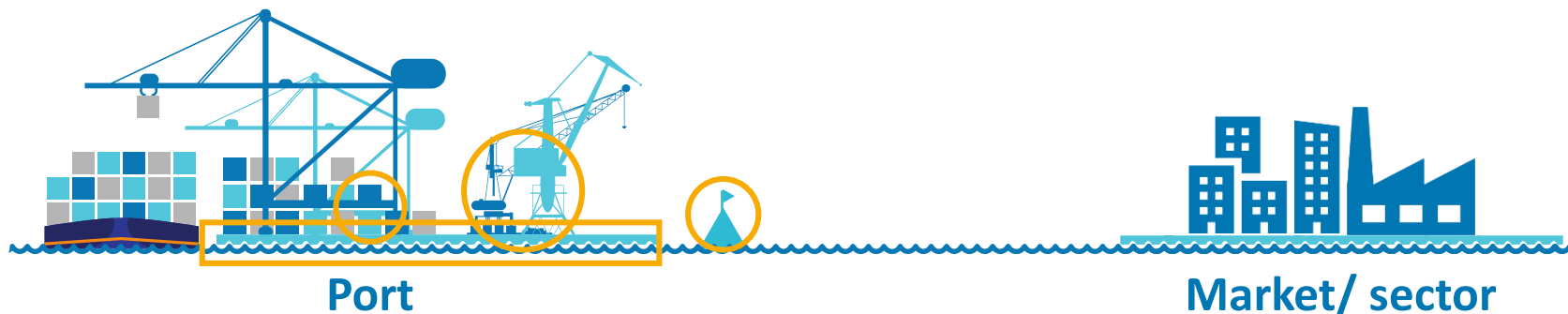
(and between ports & surrounding area)

New uses for would-be wastes generated by port activities, such as ship waste and by-products of industries within ports and port activities.



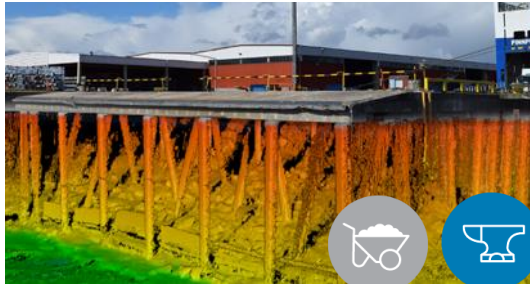
Ports & circular markets

Ports enabling other industries – both on and offshore – to become more circular by developing new activities that connect supply and demand for circular resources (targeted at resource flows through ports).



CIRCULAR ASSETS & EQUIPMENT

For example...



HAMINAKOTHA, FI

Digitalisation for better use of port assets

Digitalisation through 3D operating system - this allows intensification of daily port operations, as well as effective maintenance and repair of port facilities.



RAMSGATE, UK

Efficient maintenance through modular design

A new light-weight and modular design enables quicker buoy maintenance, with less stock in reserve, and executed by smaller ships enables more cost-effective maintenance.



Port of Kristiansand

PSS for reducing in-harbour emissions

Product/service system for reducing in-harbour emissions through onshore power supply.

A quick quiz to kick-off the discussion

Two short questions...



2-3 mins

- This theme:
- ... is very important for our port at the moment?
- ... is very easy to capture the circular opportunities of?
- ... will be more important for our port in the future?

We will discuss how more can be done or how barriers and enablers can be overcome in the next part of this session.



1. Please go to: menti.com
2. Use the code: **15 64 70 1**
3. Click 'submit'
4. Answer the questions

Follow-up question

The key question...



- **What would make it easier to do more on this theme?**

Or: what would have to change to capture more of the opportunities this theme represents?
This can be within the organisation of the port authority, or outside of it.

*A few
minutes to
think...*

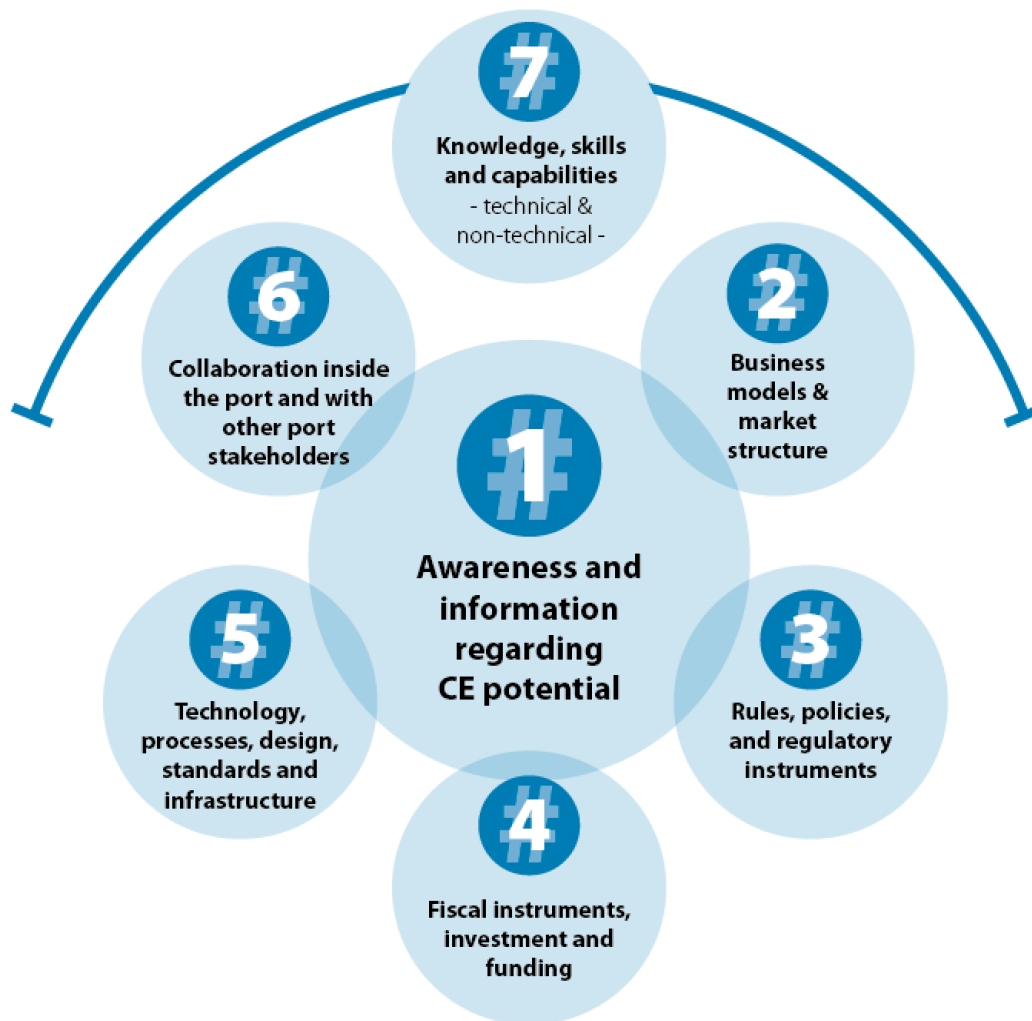


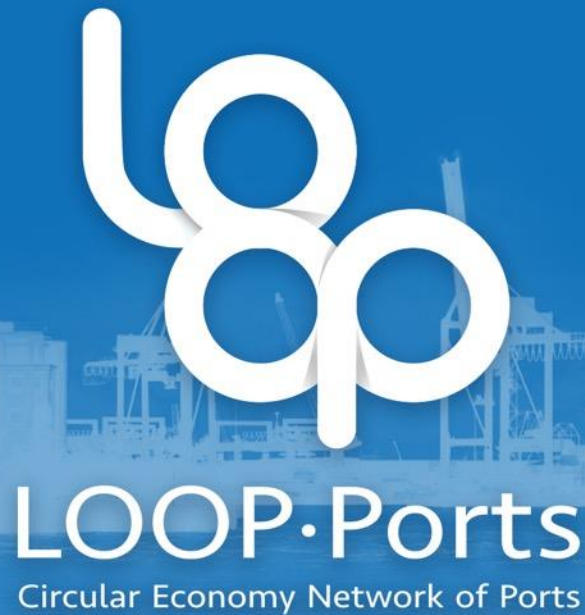
1. Please go to: menti.com
2. Use the code: **15 64 70 1**
3. Click 'submit'
4. Answer the questions

LEVERS FOR CHANGE

For example...

Group 1





CIRCULAR ECONOMY PANEUROPEAN Online Workshop 7th October 2020

Name speaker

Email and Company